

## W10

Easy to install. Easy to operate. The one photoelectric proximity sensor for all applications.

**SICK**  
Sensor Intelligence.

## Advantages



### Easy to install. Easy to operate.

The W10 photoelectric proximity sensor is a simple and intuitive sensor solution that provides the ultimate user experience. The industry's first touchscreen display in this product category simplifies installation, configuration and maintenance. The easy navigation greatly reduces the time it takes to get the device up and running.



Eliminate unplanned downtime: Define access restrictions to improve security and prevent unwanted changes during operation.



Start using the W10 for many typical applications straight away using its factory settings.



Two color indicator LEDs provide immediate visual feedback for the detection status.

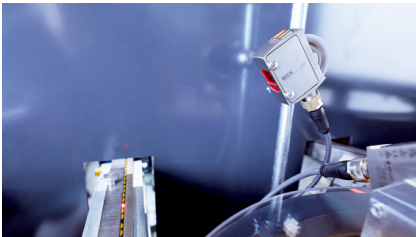


**The W10 photoelectric proximity sensor combines simplicity with versatile performance. It is easy to operate and can be adapted to specific detection tasks in no time at all.**



## Impressive performance. In a multitude of applications.

No matter where you integrate the W10, it will get the job done. By utilizing dynamic algorithms designed for specific use cases, it achieves high reliability with good repeatability. The sensor has a variety of operating modes and configurations so that it can be adapted to the specific application which extracts the best possible performance.



From speed mode for high-speed applications, to precision mode for precise positioning tasks, to standard mode for use in harsh conditions – the W10 is optimized for user success.



Configurations such as foreground and background suppression can be selected via the intuitive touch display to boost detection quality.



In addition to the common Single Value Teach, which detects objects at a defined distance, a Two Value Teach allows objects of different heights to be detected without increasing the risk of detection errors. A manual mode extends the teach options and provides high flexibility.

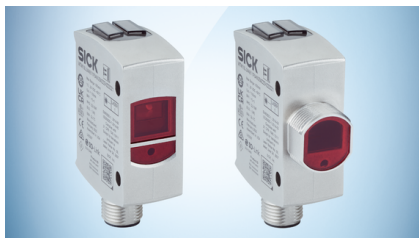


**The W10 is extremely versatile. It can be adjusted specifically for the environment to ensure ultra-reliable detection in almost any application.**



## One sensor. Countless applications.

Ultimately, choosing a photoelectric proximity sensor depends on how reliable it is and how easily it can be adapted to the application requirements. The W10 photoelectric sensor is a straightforward solution that simply works. Whether you're looking for a painless installation and commissioning experience, or for a way to streamline the supply chain, the different operating modes and configurations allow this sensor to quickly adapt to a wide range of requirements. The W10 may be the only photoelectric sensor you will ever need.



Only two versions with different fronts: one for standard 1-inch hole mounting and one for hybrid installation via the threaded M18 front or side 1-inch mounting hole.



The limited number of versions puts an end to the convoluted search for the perfect solution.



Thanks to the variety of built-in capabilities, users benefit from a versatile sensor that delivers tailored performance in a wide range of applications.



**The W10 is an all-round solution which offers unparalleled flexibility. A single sensor can be put into stock instead of many different ones with similar properties.**



## Technical data overview

|                                    |  |
|------------------------------------|--|
| <b>Dimensions (W x H x D)</b>      | 18 mm x 57 mm x 42.2 mm                                    |
| <b>Functional principle detail</b> | Background suppression, Foreground suppression, Multi-Mode |
| <b>Light source</b>                | Laser  |
| <b>Type of light</b>               | Visible red light  |
| <b>Enclosure rating</b>            | IP67, IP69   |
| <b>Housing material</b>            | Metal  |
| <b>Adjustment</b>                  | Display  |

## Product description

The W10 photoelectric proximity sensor's ease of use, sturdy design and performance make it ideal for precise object detection in demanding environments. The touchscreen display is intuitive to use, allowing parameters to be set quickly. Situation-dependent teach-ins allow convenient sensor adaptation to individual applications. The fact that various MultiMode functions and configurations, such as foreground and background suppression, are combined in a single sensor allows success in a wide range of applications.

## At a glance

- The world's first photoelectric sensor with touchscreen display-enabled sensor with refined user-interface allowing simple operation
- High performance thanks to a precise laser triangulation system with line scanning
- Buy one, manage one, inventory one, train one, troubleshoot one, replace one
- Sturdy design with 316L stainless steel housing and IP69k protection rating
- MultiMode functions such as speed, standard, and precision mode, foreground and background suppression, and teach options
- Standardized mounting, pre-configured settings and multiple teach-in options for simple sensor integration
- Button-free interface with lockout ability

## Your benefits

- Ensure confidence with an easy-to-use, end-to-end sensor experience
- Reliable, repeatable detection raises efficiency in many applications
- Convenient product selection by driving the elimination of selection
- Ideally suited even to harsh and challenging application environments
- Universally applicable
- Quick installation and commissioning
- Optional security – avoid costly down time and reconfiguration

## Fields of application

- Presence, positioning and measurement tasks
- Machine Building, Automotive, Packaging, Consumer Goods, Food & beverage, Pharmaceuticals, Electronics and Solar
- Position and presence detection in packaging machines
- Detection of dark or reflective objects such as solar panels or displays
- Detection in harsh industrial environments
- Detection of objects in feeder bowls
- Robotic material handling

## Ordering information

Other models and accessories → [www.sick.com/W10](http://www.sick.com/W10)

- **Functional principle:** Photoelectric proximity sensor
- **Functional principle detail:** Background suppression, Foreground suppression, MultiMode
- **Switching output:** push-pull: PNP/NPN
- **Switching mode:** Light/dark switching
- **Light source:** laser
- **Type of light:** visible red light
- **Connection type:** male connector M12, 4-pin

| Object distance (min.) | Object distance (max.) | Housing     | Type                         | Part no. |
|------------------------|------------------------|-------------|------------------------------|----------|
| 25 mm                  | 400 mm                 | Hybrid      | WTM10L-241612D0A00ZWZZZZZZZ1 | 1133544  |
|                        |                        | Rectangular | WTM10L-241612D0A00ZVZZZZZZZ1 | 1133545  |
|                        | 700 mm                 | Hybrid      | WTM10L-241611D0A00ZWZZZZZZZ1 | 1133546  |
|                        |                        | Rectangular | WTM10L-241611D0A00ZVZZZZZZZ1 | 1133547  |

## SICK AT A GLANCE

SICK is one of the leading manufacturers of intelligent sensors and sensor solutions for industrial applications. A unique range of products and services creates the perfect basis for controlling processes securely and efficiently, protecting individuals from accidents and preventing damage to the environment.

We have extensive experience in a wide range of industries and understand their processes and requirements. With intelligent sensors, we can deliver exactly what our customers need. In application centers in Europe, Asia and North America, system solutions are tested and optimized in accordance with customer specifications. All this makes us a reliable supplier and development partner.

Comprehensive services complete our offering: SICK LifeTime Services provide support throughout the machine life cycle and ensure safety and productivity.

For us, that is “Sensor Intelligence.”

## WORLDWIDE PRESENCE:

Contacts and other locations –[www.sick.com](http://www.sick.com)